



Silver-Line Pro-8 Pro-12 (5Hp) Operator's Manual

Read This Book

This book has important information for the use and safe operation of this machine. Failure to read this book prior to operating or attempting any service or maintenance procedure for your Silver-Line machine could result in injury to you or to other personnel; damage to the machine or to other property could occur as well. You must have training in the operation of this machine before using it. If you or your operator(s) cannot read English, have this manual explained fully before attempting to operate this machine.

All directions given in this book are seen from operator's position at the rear of the machine.

Essex Silver-Line Corporation, 1118 Lakeview Ave. PO Box 40, Dracut, MA 01826

www.essex-silver-line.com

May 2007

The Silver-Line Pro-8 Floor Sander
(Suggestions for Care & Operation...Parts List)

Introducing:

Your new Pro-8 is engineered to for years sanding hardwood floors to a beautiful finish while keeping maintenance cost to a minimum. We built it with an eye on quality. The Pro series of machines from Essex Silver-Line Corporation are shipped in a ready to use state, all testing, drum work, etc have been completed in our manufacturing plant.

Inspect:

Check the shipping cartons for any signs of damage and inspect the machine and its parts for any possible damage. Please make sure you remove the paper template when you empty the contents of this box! The Pro-8 & Pro-12 should be shipped with the following items:

Paper template, 63' cord with female end, carry handle, dustbag, operators belt, double box wrench, 7/16 combination open end wrench, socket wrenches, operators instructions.

Voltage:

The Pro-8 is manufactured using a 220volt, 3hp Universal motor. It has four carbon brushes and runs @ 17amps. The brushes allow the user to run the Pro-8 for hours staying cool without bogging down. The Pro-8 will be the strongest cutting machine you ever use.

Dust Collecting:

The dust collection system will be most efficient when the bag is emptied at 1/3 to 1/2 of its capacity. Remove all sawdust from the house or building in which you are working.

Sanding Drum:

Your Pro-8/12 comes with a spring-loaded drum. It has been dynamically balanced and trimmed before installation on your machine. All drums are leveled in our factory to assure an 8" cut. See directions on paper installation.

Wiring:

Check all wire and connections for fraying and other signs of wear before use.

Questions:

Please call us @ 1 800 451-5560 or email our website www.essex-silver-line.com if we can answer any questions.

Warranty:

Please fill out the enclosed warranty card, tear at the perforation and mail the proper section to our Dracut, MA plant.

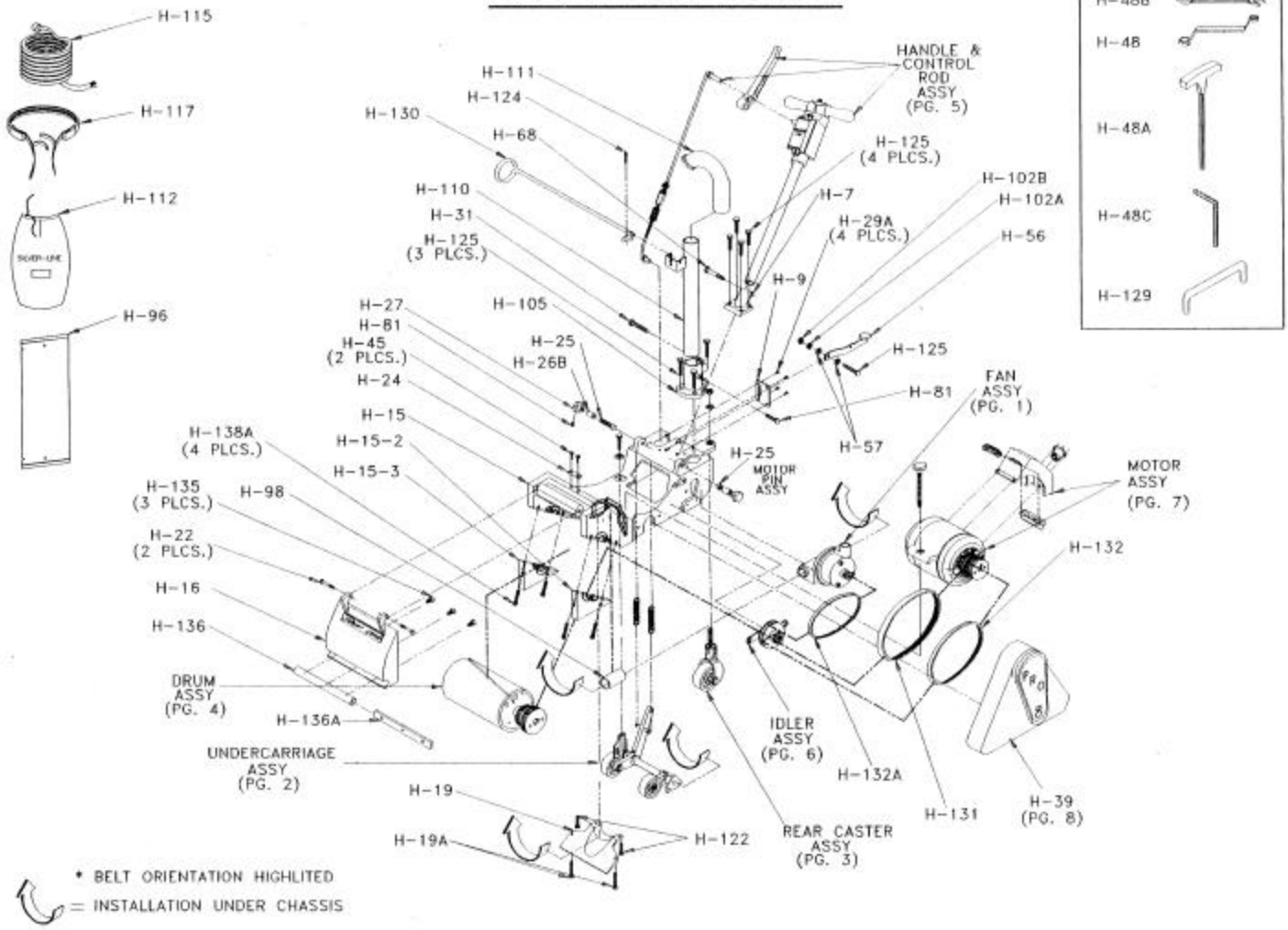
Essex Silver-Line Corporation
1118 Lakeview Ave. PO Box 40
Dracut, MA 01826
(978) 957-2116, fax (978) 957-6989
Toll Free 800 451-5560

Part #	Description	Cost	Part #	Description	Cost
H1	3HP Motor (220V 60hz)	\$3,100.00	H29A	Flat Head Screw 10-24x1/2"	\$0.30
H12HP	2HP Motor (110v/220v 60Hz)	\$3,250.00	H31	Hex Head Bolt 3/8" -16x1"	\$0.30
H13HP50Hz	3HP Motor (220V 50hz)	\$3,250.00	H31A	3/8" Ext Tooth Lock Washer	\$0.30
H2	Large Pulley Inner Motor (3HP)	\$71.00	H32	Left Carriage Housing	\$22.20
H3	Pulley Flange (3HP)	\$9.00	H33	Drum Bearing Plate (For H15)	\$7.80
H3A	Motor Pulley Flange (2HP)	\$9.00	H34	Hex Head Bolt Full Thread 3/16"-18x3/4"	\$0.30
H4	Outer Motor Pulley Small (3HP)	\$70.00	H35	Inner Drum Pulley Small (3HP)	\$48.90
H4A	Outer Motor Pulley Large (2HP)	\$70.00	H35A	Inner Motor Pulley Small (2HP)	\$54.35
H5	Motor Vee Pulley 3HP	\$34.00	H36	Drum Pulley Large 3HP-2Hp	\$56.70
H5A	Motor Vee Pulley 2HP	\$34.00	H36A	Drum Pulley (Large)	\$56.90
H6	Carriage Adjusting Screw (3/8-16X2)	\$2.00	H37	#9 Woodruff Key	\$0.30
H7	Handle Base	\$68.00	H38	Key	\$0.00
H8	Stop Nut (3/8-16)	\$0.60	H39	Belt Guard	\$108.80
H9	Foot Control Plate	\$26.50	H40	Idler Stud	\$16.60
H13	Drum Bearing (2)	\$9.80	H41	Motor Shaft Key 1/4" x 1 1/4"	\$2.20
H14	Drum Bearing Housing (Old Style) 2	\$11.00	H42	Idler Pulley	\$57.70
H14A	Bearing Boot (2) (#200-W-2)	\$11.00	H43	Fan Vee Pulley (#OK-15 x 5/8)	\$20.00
H15	Chassis w/Bearing Cap (2)	\$840.00	H43A	Fan Vee Pulley (Slow Speed)	\$20.00
H15-2	Left Bearing Cap	\$35.50	H44	Snap Ring (#5100-62)	\$0.70
H15-3	Right Bearing Cap	\$35.50	H45	Hex Head Bolt Full Thread 1/4" x 20x1/2	\$0.30
H16	Drum Cover	\$72.00	H45A	Hex Head Bolt Full Thread 1/4" x 20x1/2	\$0.30
H16A	Drum Cover (Old Style Chassis)	\$72.00	H45B	Hex Nut (1/4" x 20)	\$0.30
H17	Drum Spacer (Inner)	\$10.50	H45C	Lock Washer, 1/4" I.D.	\$0.10
H18	Hex Nut (5/8-18)	\$0.90	H46	Stop Pin	\$7.70
H18A	Exterior Tooth Lock Washer (5/8")	\$0.90	H47	Idler Socket	\$35.50
H19	Scoop	\$45.00	H48	Combo Box Wrench 9/16 & 1/2	\$7.22
H19A	Filister Head Screw (10-24x1 1/4")	\$0.30	H48A	Hex Tee Wrench (34590 9" x 1/4")	\$9.70
H21	Foot Control Spring	\$4.45	H48B	Open End Wrench (7/16 x 1/2")	\$4.45
H21A	Carriage Assembly Spring	\$4.45	H48C	1/8" Key (Short Arm)	\$1.00
H21AS	Carrying Ass Spring (Special)	\$5.50	H49	Control Lever	\$39.00
H22	Hex Head Shoulder Bolt (5/16-18x2 1/2)	\$0.50	H50	Upper Control Rod (Short)	\$21.00
H23	Belt Guard Bracket (2)	\$5.50	H50A	Upper Control Rod (Long)	\$21.00
H24	Motor Adjusting Plate	\$8.30	H51	Jam Nut 3/8"-24	\$0.30
H25	Motor Pin	\$10.00	H52	Control Coupling	\$10.00
H26A	Motor Pin Left Bushing (Long)	\$13.30	H53	Spring Plate	\$10.00
H26B	Motor Pin Right Bushing (Short)	\$13.30	H53A	Flat Washer 3/8" I.D.	\$0.30
H27	Motor Pin Knob	\$14.45	H54	Control Lever Stud, Hx Hd Bolt .5"-13x2	\$5.50
H28	Belt Guard Clip	\$3.85	H55	Lower Control Rod	\$19.00
H29	Round Head Screw 10-24x3/8"	\$0.30	H56	Foot Pedal	\$17.00
	Essex Silver-Line Corporation		Toll Free 800 451-5560		
	1118 Lakeview Ave.		Fax (978) 957-6989		
	PO Box 40		Phone (978) 957-2116		
	Dracut, MA 01826		www.essex-silver-line.com		

Part #	Description	Cost	Part #	Description	Cost
H57	Flat Washer 5/16" I.D.	\$0.30	H88A	Motor Knob Screw	\$1.80
H58	Carriage Spring Stud 5/16" -18 x 3/4	\$4.45	H89	Drum Pad red rubber 5/8 x8 3/8 x 24 1/2	\$83.30
H59	Handle Box Cover	\$22.00	H90A	Paper Cam	\$49.00
H60	Handle Tube (Short Version)	\$27.00	H90B	Drum End Cap (w/Key Slot)	\$60.00
H60A	Handle Tube (Long Version)	\$27.00	H90B1	Drum End Cap	\$60.00
H61	Oval Head Screw 1/4"-20 x 3/8	\$0.30	H90B1S	End Cap w/o Slot	\$60.00
H62	Handle Box	\$50.00	H90 BS	End Cap w/Slot	\$60.00
H63	Handle Cap Washer	\$6.60	H90C	Paper cam Bushing (Copper)	\$2.70
H64	Acorn Nut 3/8" -16	\$2.25	H90D	Drum Barrel	\$134.00
H65	Stud 3/8" -16 x 3	\$2.25	H90E-400	Pawl	\$11.95
H66	Handle	\$14.45	H90E-440	Pawl	\$11.95
H67	Hex Jam Nut 1/2" -13	\$0.40	H90E-450	Pawl	\$11.95
H67A	1/2" Exterior Tooth Lock Washer	\$0.30	H90E-500	Pawl	\$11.95
H68	Hex Head Bolt 3/18" -16 x 1 3/4"	\$0.50	H90E-550	Pawl	\$11.95
H69	Toggle Guard (On/Off)	\$8.00	H91	Balance Rod	\$18.90
H70	Lock Ring (#5100-59)	\$0.80	H93	Flat Head Screw 3/16" -18 x 1	\$0.30
H71	Caster Plate	\$8.00	H95	Drum Shaft	\$125.00
H72	Bearing (#6202)	\$9.45	H95A	DrumShaft 12"	\$162.00
H73	Caster Spacer	\$5.50	H96	Template	\$20.00
H74	Caster Axle	\$19.00	H97	Hex Head Bolt 5/16" -18 x 1	\$0.30
H75	Caster Stud	\$22.00	H98	Dust Pan Sleeve 2.5" I.D. x 5.5" Long	\$11.78
H76	Caster Yoke	\$64.45	H99	Fan Housing Cover	\$45.00
H78	Switch Box	\$85.50	H100	Spring Pin 1/4" x 2"	\$2.30
H79	Round Head Screw 8-32x3/8"	\$0.30	H101	Hex Nut 1/2-20 (Left Hand Thread)	\$3.56
H80	Base Plug (20 Amp Old Style) 3325C	\$25.50	H102	Carriage Bolt 5/16" -18 x 1"	\$0.60
H80A	Base Plug (30 Amp Ground In) 2625	\$25.50	H102A	5/16" Ext. Tooth Lock Washer	\$2.00
H80B	Black Switch Wire	\$0.75	H102B	Hex Jam Nut 5/16"-18	\$0.30
H80G	Green Switch Wire	\$0.75	H103	Fan	\$54.00
H80W	White Switch Wire	\$0.75	H104	Fan Shaft	\$30.00
H81	Set Screw 1/4" -20 x 3/8"	\$0.30	H105	Dust Tube Base	\$51.00
H82	110v/220v Switch 2HP (80988)	\$85.00	H106	Fan Housing	\$78.00
H83	Toggle Guard (110V/220V)	\$6.70	H108	Bearing (6003)	\$9.45
H84	Round Head Screw 6-32 x 3/4"	\$0.30	H109	Collar w/set Screw 5/8" I.D.	\$5.20
H84A	Flat Washer 1/8" I.D.	\$0.30	H110	Dust Tube	\$57.00
H84B	Hex Nut 6-32	\$0.30	H111	Elbow	\$56.00
H84C	Pan Head Screw 6-32 x 1/2"	\$0.30	H112	Dust Bag	\$20.00
H84D	3/16" Ext. Tooth Lock Washer	\$0.30	H113	Bearing (6003)	\$10.00
H85	Set Screw 1/4" -20 x 3/8"	\$0.30	H114	Front Wheel Axle	\$14.00
H87	On/Off Switch (6808 UD)	\$36.00	H115	Cord Assembly (Female End Only)	\$136.00
H88	Motor Adjusting Screw	\$25.50	H116	Felt Wheel	\$46.00
	Essex Silver-Line Corporation 1118 Lakeview Ave. PO Box 40 Dracut, MA 01826		Toll Free 800 451-5560 Fax (978) 957-6989 Phone (978) 957-2116 www.essex-silver-line.com		

Part #	Description	Cost			
H116P	Polyurethane Wheels w/Bearings	\$70.00			
H117	Operators Belt	\$18.00			
H118	Front Wheel Spacer	\$9.00			
H119	Carriage Bearing Right	\$47.30			
H120	Pro-8 Chassis Complete w/o Motor	\$3,777.00			
H121	Carriage Assembly	\$103.00			
H121A	Short Arm				
H121B	Long Arm				
H122	Filister Head Screw (10-24 x 3/4")	\$0.30			
H123	Belt Guard Pin	\$6.60	E-1	5HP (220v 60 hz) Pro-12	\$3150.00
H124	Cotter Pin	\$0.30			
H125	Hex Head Bolt	\$0.30			
H126	Collar w/set Screw	\$4.45			
H129	Carrying Rod	\$10.30			
H130	Wire Support	\$15.50			
H131	Power Belt (3HP) #320H075	\$38.50			
H131A	Power Belt Low Speed #300H075	\$38.50			
H131B	Idler Belt Low Speed	\$16.20			
H132	Idler Belt (2HP or 3HP)	\$8.00			
H132A	Fan Belt (2HP or 3HP)	\$16.00			
H133	Pan Head Screw	\$0.30			
H134	Motor Mounts	\$20.50			
H135	Flat Head Screw	\$0.30			
H136	Rubbber Bumper	\$5.50			
H136A	Bumper Bracket	\$4.45			
H137	Key	\$1.95			
H138	Socket Head Screw	\$1.00			
H138A	Socket Head Screw (5/16)	\$1.00			
H139	Outer Drum Spacer	\$10.30			
H140	Adjusting Screw Washer	\$0.30			
H141	Control Lever Bushing	\$1.20			
H141A	Control Lever Bushing	\$1.00			
H141B	Nylon Washer	\$0.70			
H141C	Nylon Washer	\$0.70			
H149	Pro-8 Fan Assembly	\$372.00			
H149E	Pro-8 Fan Assembly Exchange	\$372.00			
H150	Idler Assembly	\$167.00			
H151	Brush Holder for Pro-8	\$13.00			
H152	Brush Spring	\$24.00			
H154	Rear Caster Assembly for Pro-8	\$188.00			
H154p	Polyurethane Rear Caster Assembly	\$192.00			

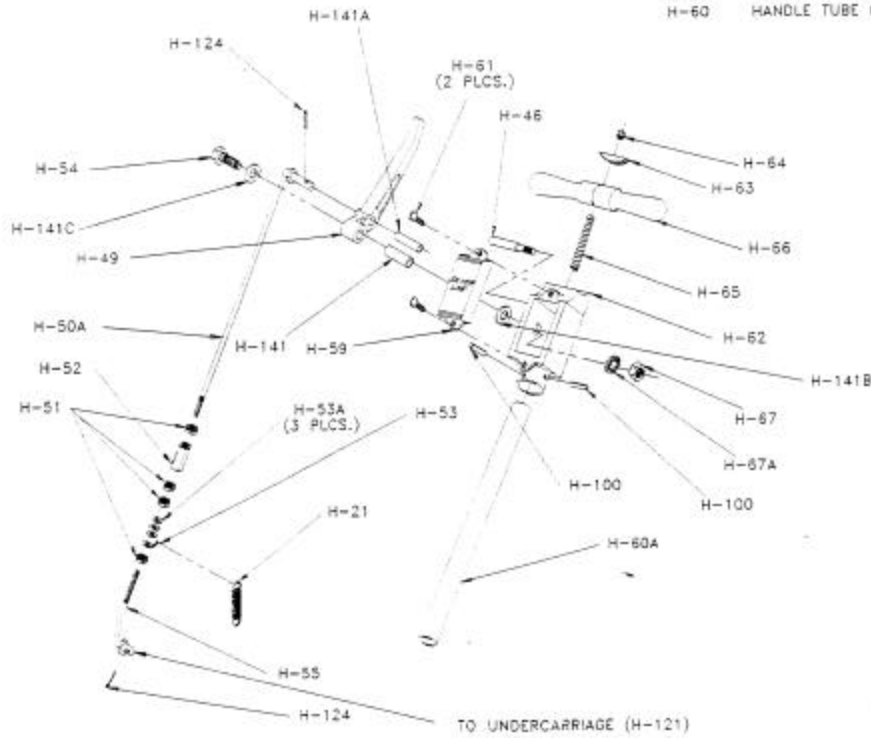
—PRO-8 EXPLODED ASSEMBLY—



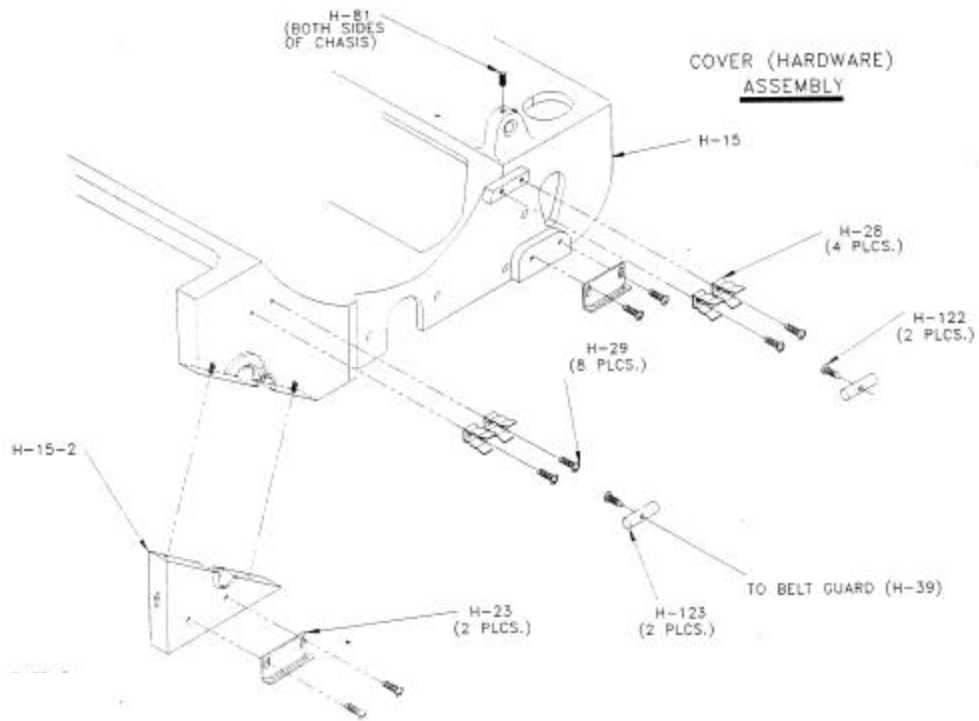
HANDLE AND CONTROL ROD ASSEMBLY

NOT SHOWN

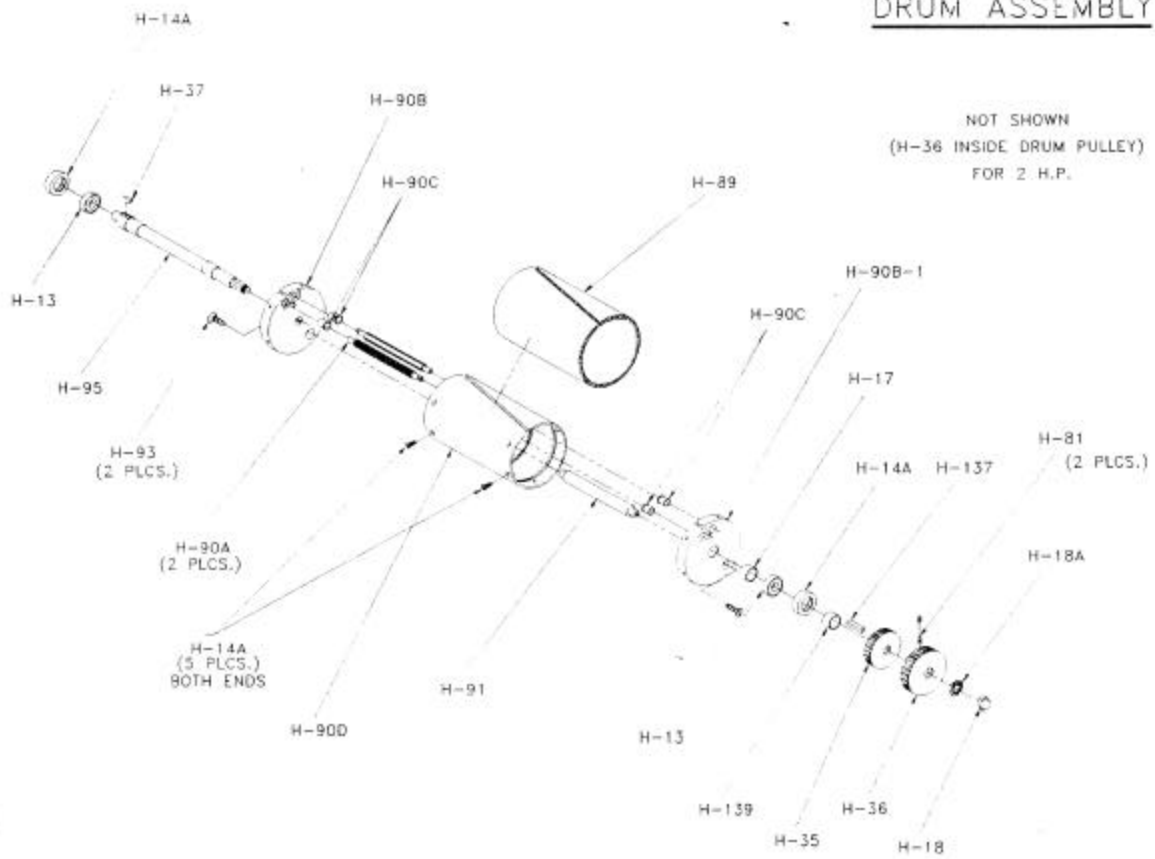
- H-50 UPPER CONTROL ROD (SHORT VERSION)
- H-60 HANDLE TUBE (SHORT VERSION)



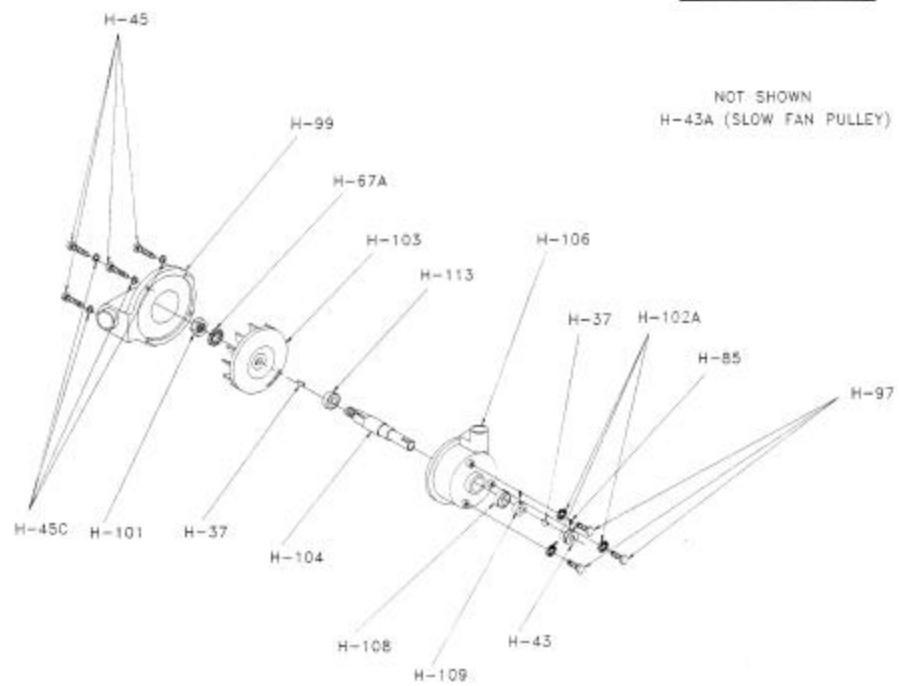
COVER (HARDWARE) ASSEMBLY



DRUM ASSEMBLY



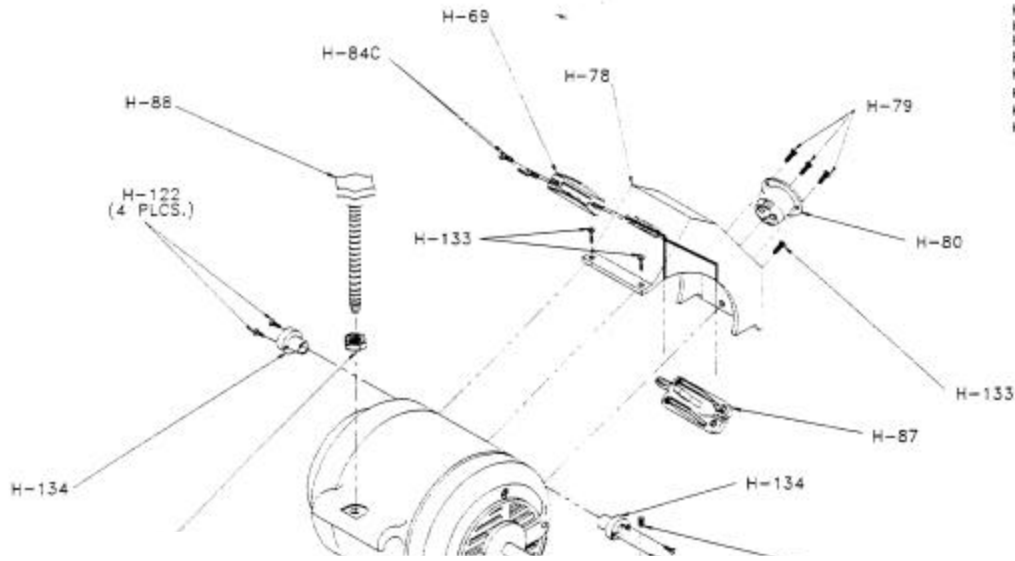
FAN ASSEMBLY



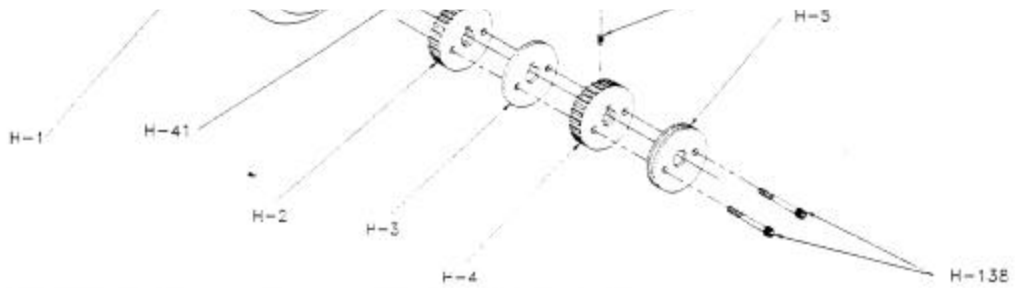
MOTOR ASSEMBLY

NOT SHOWN

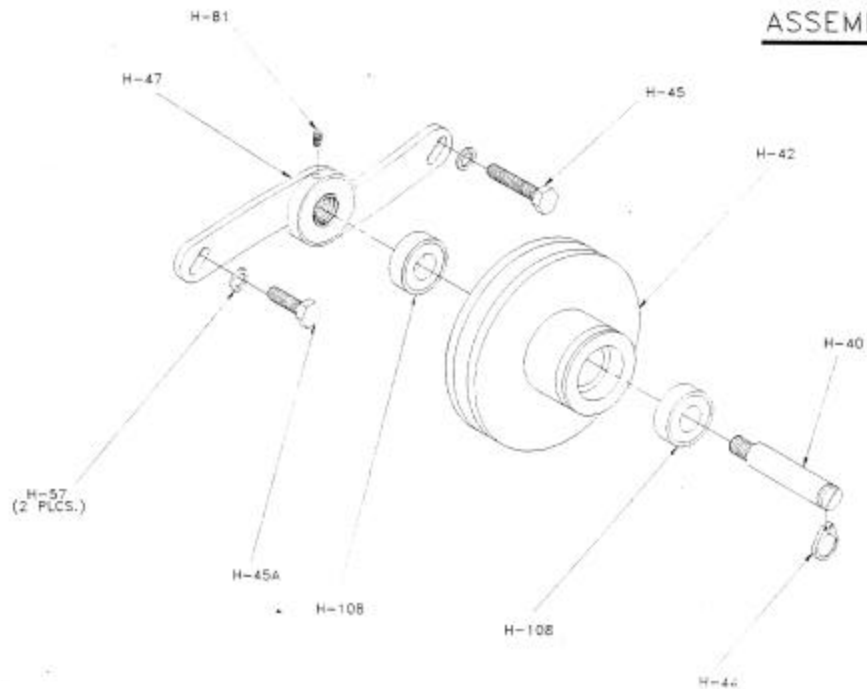
- H-35A MOTOR PULLEY, SMALL
- H-4A LARGE PULLEY (2 HP.)
- H-5A "V" PULLEY (2 HP.)
- H-138A SOCKET CAP SCREW (2 HP.)
- H-131A PWR. BELT (LOW SPEED)
- H-131B IDLER BELT (LOW SPEED)
- H-82 SWITCH 110/220
- H-83 TOGGLE GUARD FOR SWITCH



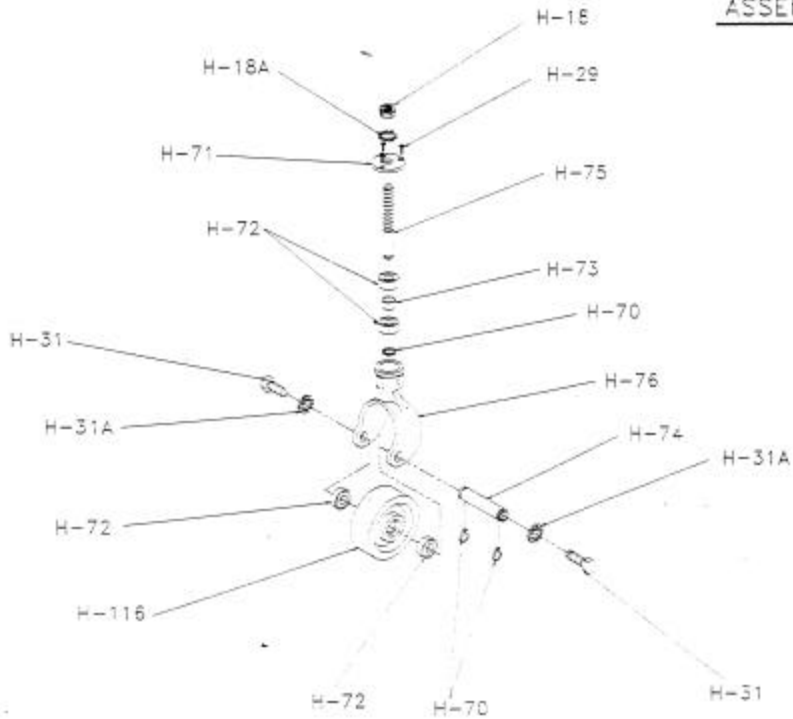
H-67



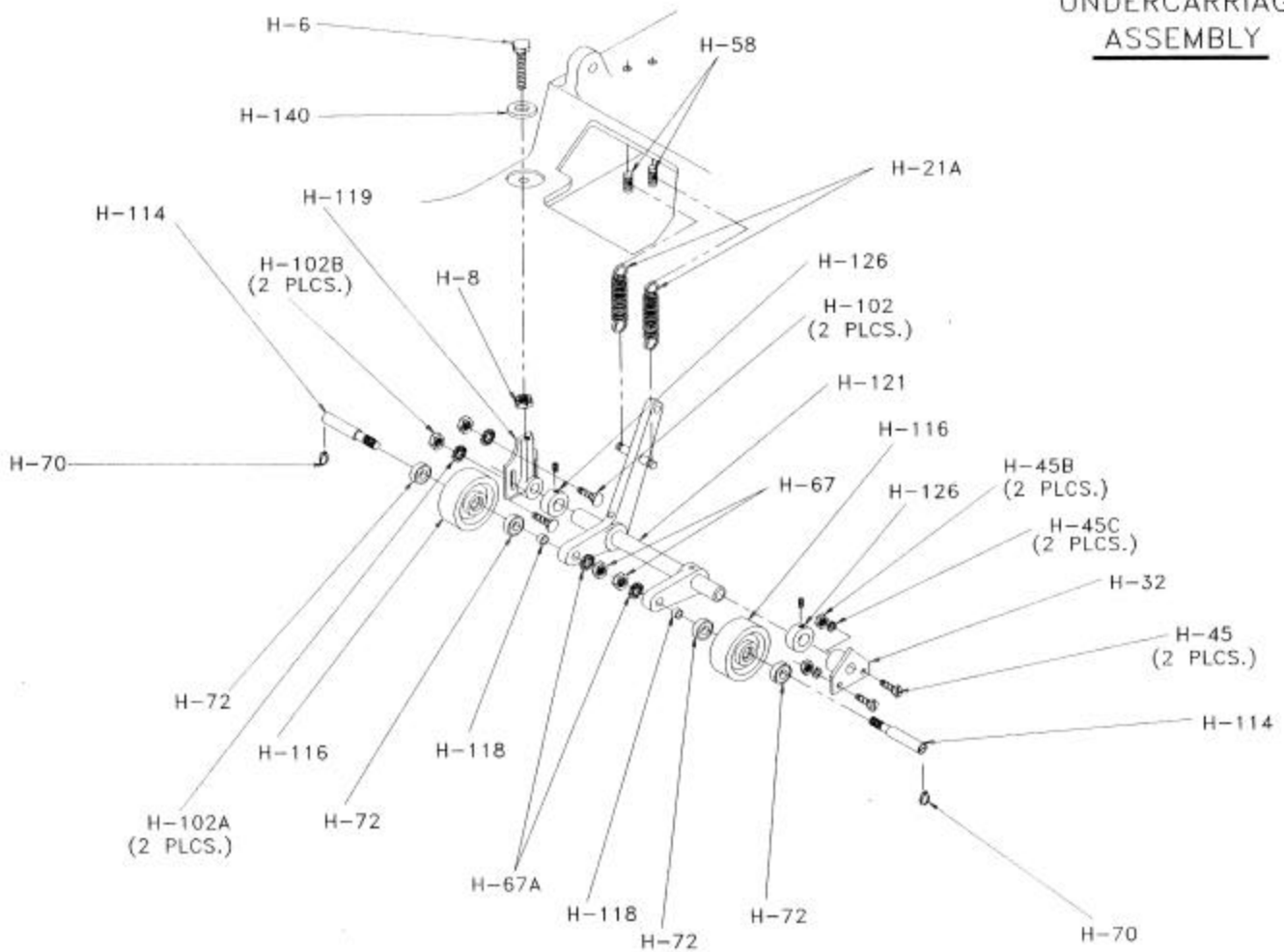
IDLER ASSEMBLY



REAR CASTER
ASSEMBLY



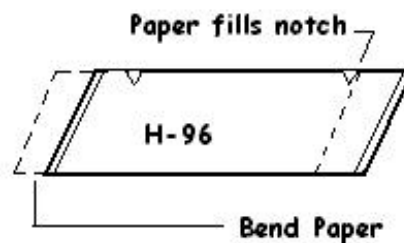
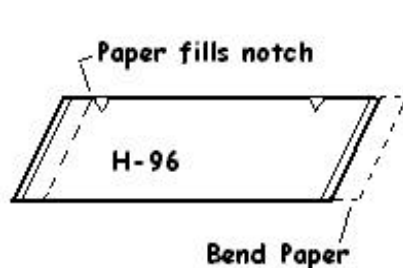
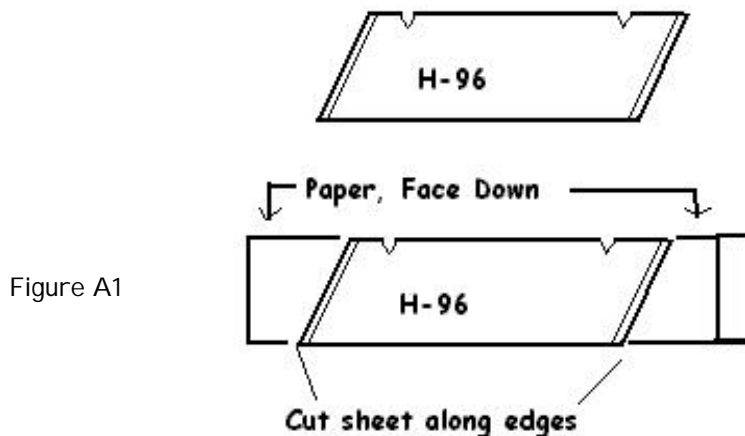
UNDERCARRIAGE
ASSEMBLY



Cutting & Bending paper For the Pro-8

Tools Required: 1 ea. H-96 Paper Bending Template (Supplied w/Machine)

- 1) Roll the paper out on the cutting surface with the grit down. *If the sandpaper is being cut on a wood floor make sure the cutting edge of the template is aligned with the grain of the wood.* Place the template on the paper with the folded ends facing up; align the edges of the template with the paper. The template lays lengthwise across the paper. **(Figure A1)**
- 2) Cut the paper following the angled edges of the template using a knife, screwdriver or some other sharp object. *Note: Once a sheet of paper has been cut from a roll the edge of the roll is ready for the next piece of paper.* **(Figure A1)**
- 3) To bend the paper, slide the template along the paper towards one end. Move the template until the sheet fills the "V" notch at the top of the template. The edge of the paper should just touch the outside edge of the "V" notch. Lift up on the paper to bend it at the opposite end. **(Figure A2)** Be careful to not break the paper during this process. Move the template down to the other end of the paper, align the notch and bend the second side. **(Figure A3)**
- 4) Note: As the drum wears with age you must adjust your use of the template. Fill the notches with less paper to allow a larger folded section in the drum.

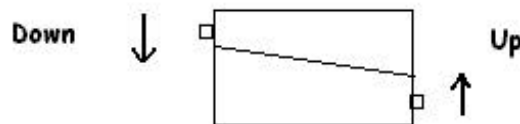


Procedure for loading paper on The Pro-8 sander

Tools Required: 1 ea. H-48B 7/16" Wrench (Supplied w/Machine)
1 ea. H-96 Paper Bending Template (Supplied w/Machine)

- 1) Disconnect the sander from the power source.
- 2) Using the paper cutting and bending template cut your paper to size and bend the edges.
- 3) Sit in front of the sander, lift the drum cover and turn the drum until the slot is facing you. Locate the cams on either side of the drum, and turn them until the painted notch is showing, opening the slot completely.
- 4) Insert one end of the paper into the slot, turn the drum one full rotation and insert the other end of the sheet. *Once the paper is wrapped around the drum, it may be easier to remove the paper from the drum and insert the top part of the sheet first and follow with the bottom part of the sheet.* Push the paper into the slot until it is snug to the rubber cover; make sure that the edge of the paper is even with the edge of the drum.
- 5) Use the 7/16" wrench to turn the cams, ¼ rotation, one at a time to tighten the paper on the drum. The left cam turns down, while the right turns up. *There are no shims required with the spring-loaded Pro-8 drum.* The spring-loaded cams will pull the paper into the drum to the right pressure.
- 6) Remove the wrench, roll the drum around and look for loose spots in the paper. If you find bubbles or loose spots loosen the cams and reinstall the paper. *If you see a tear or cracks in the paper remove it and start over with a new piece.*

To remove paper turn the cams in the opposite direction, and pull the paper out of the slot.



Drum Maintenance for Pro-8 & Pro-12

The spring-loaded cam action of the Pro-8 & Pro-12 requires simple maintenance procedures to keep the drum working correctly. As with all floor sanding equipment your new Silver-Line machine should be kept clean and blown off with compressed air.

Your new drum has moving parts in it and must be blown out to assure correct movement. Insert 20 grit shims and close the cams to open the area between the moving cam and aluminum end cap. Blow this area out on both sides and check the movement of the cams; it should rest tight against the end cap when released, repeat until the cam has its full movement.

Use a straightened out paper clip can be used as a pick to loosen hardened sawdust.

Try to blow out the drum on a weekly basis.



Clean out Here

Pro-8/12 Adjustments

Orientation (right, left, front, back)

All points of reference for these adjustments are based on your location during operation of the sander. All directions are seen from the operator's position at the rear of the sander, the front of the machine is the drum end, rear is by the handle, the left side has the belt cover while the right side is the flat, polished side.

Preliminary Adjustments:

To begin adjusting the machine you must bring the rear caster to a starting setting. The initial rough setting should be 1/8" to 1/4" space from the top of the caster to the underside of the chassis. **Note: Turning the caster stem clockwise will lower the drum to the floor, while a counter clockwise turn will raise the drum away from the floor.**

Adjusting the drum to a FLAT CUT:

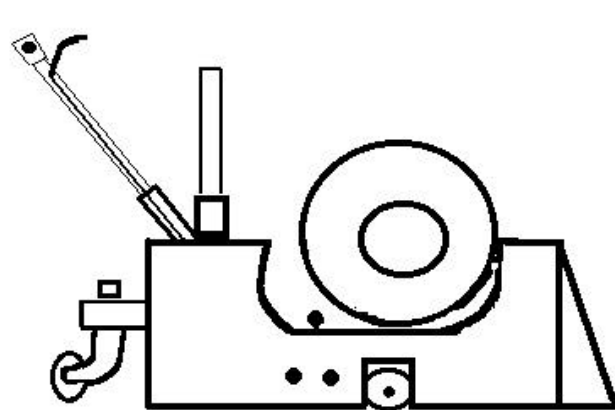
Note: This must be done before the drum height adjustment

Tools Required: 1 ea. H-48 1/2" x 9/16" Combination Box Wrench (Supplied w/Machine)

Face the right side of the machine and locate the two hex nuts (H106B) behind the wheel well. Use the wrench to loosen these bolts, turning them counter clockwise, allowing the undercarriage to move. The bolts should be able to turn easily with your fingers. **Never attempt to adjust the drum flat without loosening these nuts.**

Locate the adjusting bolt (H6) on the top of the chassis, behind the motor, right above the nuts. Place the 9/16" end of the wrench on this bolt so that it is perpendicular to the chassis. Moving the wrench to the front of the machine (counter clockwise) will cause the right side of the drum to rise while turning the wrench to the rear of the machine (clockwise) will lower the right side of the drum. **Note: The left side of the drum is in a fixed position; the right side adjusts to match the left.**

Hand tighten the hex nuts on the side of the machine and check the sanding pattern (use 100 grit paper on a flat surface). Repeat the adjustment until your machine is making a straight cut across the drum. When the cut is correct tighten the bolts with the 1/2" side of the wrench. **Do not over tighten!**



Adjusting the Drum Height:

Note: The machine must be adjusted to make a flat cut before adjusting the height

When your machine is adjusted to the correct height you will be able to slip the ½" side of your open end drum wrench along the full length of the drum when the machine is set as follows:

- The control lever (H49) is in the up position
- The foot control (H56) is in the 1st position, lightest pressure
- The Rear caster yoke (H76) is facing away from the back of the chassis
- The drum has a sheet of 100 grit paper properly loaded on it.

If your wrench does not fit under the drum or if the drum is too far away from the wrench, then you need to adjust the height. To make fine adjustments turn the rear caster, while major adjustments are made using the long control rod (H50A).

The rear caster should not be moved more than two (2) rotations, if the machine needs further adjustments use the control rod method. To use the control rod method, remove the cotter pin in the handle and loosen the nut at the base of the rod. Turn the rod clockwise to raise the drum and counter clockwise to bring the drum closer to the ground. Insert the long control rod back into the control lever (H49) and test the height. Continue adjustments until the wrench can slip under the drum.

When you have adjusted the drum to the correct height check the feel of the control lever as you lower the drum. If it handles too heavy and the drum drops too hard you can fine-tune it. To make it work smoother turn the long control rod one turn in a counterclockwise direction than turn the rear caster assembly 2.5 times in a counterclockwise direction. *Note: After this adjustment test the drum height and repeat fine adjustments if necessary.*

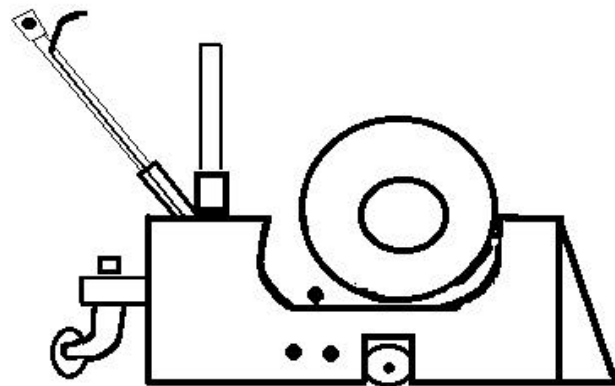
Additional Notes of Interest:

When considering drum height, one rotation of the long control rod is equal to 2.5 rotations of the rear caster assembly in the same direction.

Turning the long control rod clockwise will raise the drum and make the feel of the handle heavier. Counterclockwise rotations will lower the drum and make the feel of the control lever lighter.

Call our professional machine department (Frankie or John) at 800 451-5560 or (978) 957-2116 if you have any additional questions. You can also contact us @

www.essex-silver-line.com.



Pulley Set up & Uses

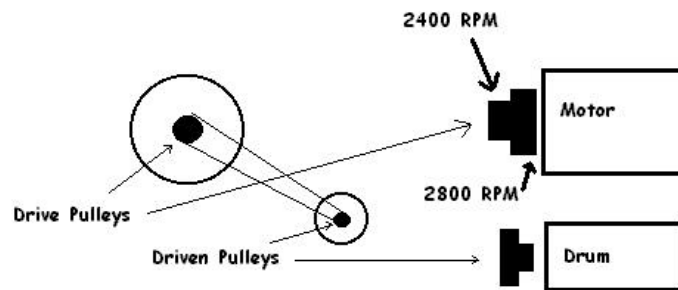
Both the Pro-8 & Pro-12 floor machines come equipped with a dual pulley system. Two pulleys on the shaft of the motor and drum work together to allow the user to change how the machine works. These machines can either provide more power or drum speed depending upon the pulley set up.

Power:

The outer pulleys run the drum @2400 rpm, for more power. The small pulley (H4) on the motor drives the larger (H36) pulley on the drum at a lower speed for maximum power. The 2400-rpm setting is the most popular speed for the Pro-8.

Speed:

The inner pulleys run the drum at 2800 rpm, for more speed. The large pulley (H2) on the motor drives the smaller pulley (H35) on the drum at a higher speed.



Motor Removal for the Pro-8 & Pro-12

One of the best features of the Pro-8 & Pro-12 is the ease of motor removal. These machines are very easy to transport for one person, in a matter of minutes a person can disassemble, move the machine and reassemble it. To remove the motor please read the directions that follow:

Remove the power cord from the motor and power source; take off the belt cover (H39).

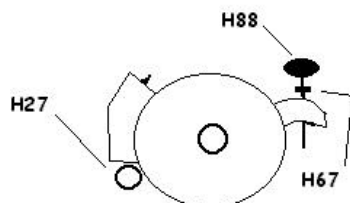
Loosen the retaining nut (H67) on the Motor adjusting screw (H88).

Turn the motor adjusting screw counterclockwise to slacken the tension of the belts on the pulleys. When the belts are loose enough take both the idler belt (H132) and the power belt (H131) off the pulleys.

Turn the two Motor pin knobs (H27) counterclockwise to extract them from the motor

Using proper lifting techniques, lift the motor off the chassis; make sure the wire support (H130) is out of your way.

To reinstall the motor reverse the previous procedures. Make sure the motor is properly seated on the chassis before tightening the motor pin knobs.



Drum Removal Pro-8 & Pro-12

The drum removal and reinstallation process on Silver-Line sanders is unique to our family of sanders. This process will take approximately 5 minutes and one tool the "T" wrench (H48A).

Essex Silver-Line recommends that your drum be exchanged or resurface every year or two (as necessary) by Essex Silver-Line Corporation as part of regular machine maintenance.

Please follow these directions for drum removal:

Remove the power cord from the motor and power source; take off the belt cover (H39).

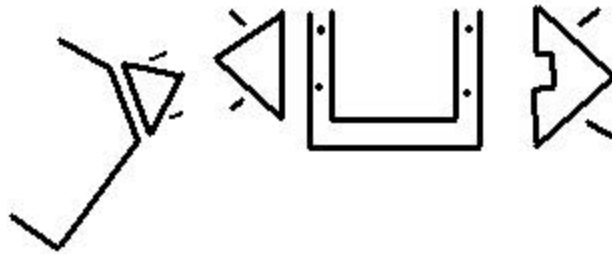
Turn the motor adjusting screw counterclockwise to slacken the tension of the belts on the pulleys. When the belts are loose enough take only the power belt (H131) off the pulleys.

Open the drum cover (H16) and turn the machine over so it rests on the drum cover and dust tube, exposing the four socket head screws (H138A).

Using the "T" wrench remove the four screws (H138A) and take off the bearing caps (H15-2 & H15-3).

Remove the drum assembly from the chassis. Install the exchanged drum or the newly recovered drum and reinstall the bearing caps & screws.

After the drum is on the machine turn it back upright, reinstall the belt, tighten it and install the belt cover.



Brush Replacement for the Pro-8 & Pro-12

*Please be advised that a **set** of brushes for the Pro-8 & Pro-12 consist of four (4) carbon brushes or two **pair** of brushes. Part #PB is a **set** of brushes and costs \$20.00 as of this writing. A **pair** of brushes consists of two carbon brushes connected by a wire. When changing brushes on Silver-Line machines do both pairs of brushes, one at a time.*

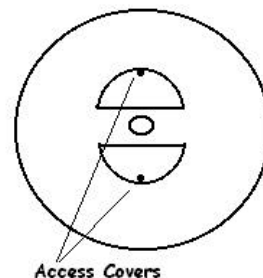
Brush Replacement directions:

Remove the power cord from the motor and power source; take off the belt cover (H39).

Loosen the retaining nut (H67) on the Motor adjusting screw (H88).

Turn the motor adjusting screw counterclockwise to slacken the tension of the belts on the pulleys. When the belts are loose enough take both the idler belt (H132) and the power belt (H131) off the pulleys.

Remove the access covers (2) from the motor.
(Located on the pulley side of the motor)



Using compressed air blow out the motor very well. This should be done on a weekly basis as a matter of regular maintenance.

Locate a pair of brushes (two carbon brushes connected by a wire).

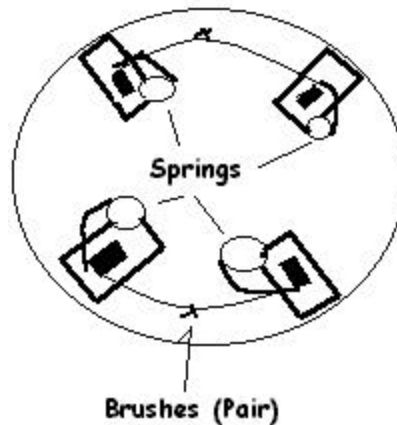
Remove the brush springs from the pair of brushes. Lift the spring and pull it towards the outside of the motor, gently lower it outside the brush holder. It will rest on the armature; do not move the motor shaft!

Remove the old brushes and blow out the brush holder thoroughly. Install the new pair of brushes, locating the spring slot towards the backing plate. Make sure the wire connecting the brushes is behind the spring and in front of the backing plate. Twist the wire between your fingers to take out the slack and assure the wire will not touch any moving parts.

Reinstall the brush springs into the slot on the new brushes, make sure the springs clip into the top of the brush.

Repeat steps #5 through #8 for the second pair of brushes.

Reinstall the access covers, belts and belt cover.



Essex Silver-Line Corporation
PO Box 40
1118 Lakeview Ave.
Dracut, MA 01826
(978) 957-2116, Fax (978) 957-6989
Toll Free 800 451-5560

www.essex-silver-line.com

Essex Silver-Line Corporation

Limited One Year Warranty

Essex Silver-Line Corporation warrants the floor sanding equipment for a period of one year from the date of original purchase. We will repair or replace at our option, any part or parts of the products under this warranty which examination proves to be defective in workmanship or materials during the warranty period. For repair, return machine or parts to Essex Silver-Line Corporation transportation prepaid. This warranty does not apply to repair or replacement required due to misuse, abuse, normal wear and tear and/or repairs attempted or made by other than our service center. For the purpose of this warranty, damage resulting from accident, use of defective or inadequate wiring at the installation in which used, improper cleaning or operation, fire, floods or act of God, are not covered. No other warranty implied or expressed is offered and under no circumstances shall Essex Silver-Line Corporation be liable for an incidental or consequential damage.

Essex Silver-Line Corporation
PO Box 40
1118 Lakeview Ave
Dracut, MA 01826
(978) 957-2116, Fax (978) 957-6989
Toll Free 800 451-5560
www.essex-silver-line.com

